



LED WING STROBE LIGHT P/N 6482701

MAIN FEATURES - Aviation Led Wing Strobe Light CS25 Certified (Dassault Aviation F900 & F2000)

•Reliability

MTBF: 40 000 H

Led light source: 20 000 H

•Low weight

•Resistance to high vibrations

•Tested for extreme environment

Dassault Aviation EGS / DGT-DTF/SYS/AV 69706

TECHNICAL FEATURES

Power: 48W

Light energy:: > to 400 cd with PSU P/N 6482702

Color: Aviation white

•Operating Temperature :

-55°C / +70°C

• Connecting:

HE 302 17R 14 B5 PNH

- A: Input + High voltage

- B: not used

- C: - Input - High voltage

- D: Mechanical ground

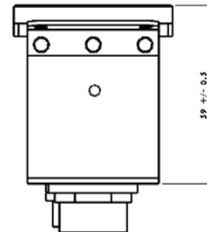
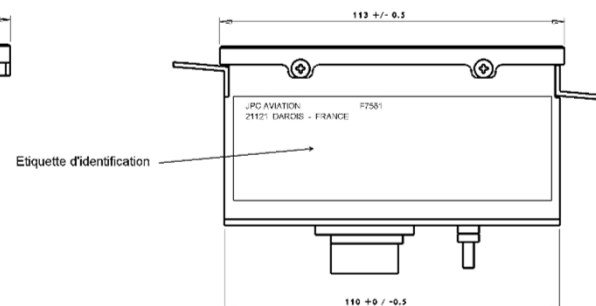
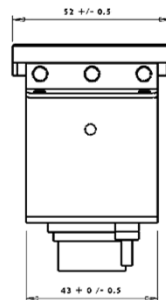
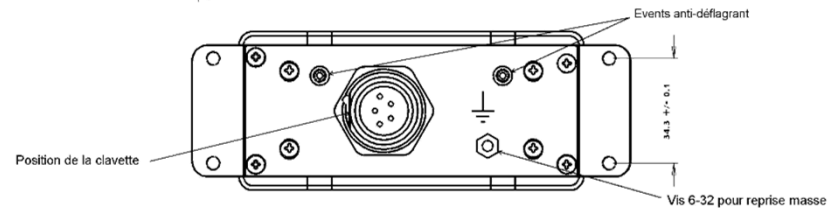
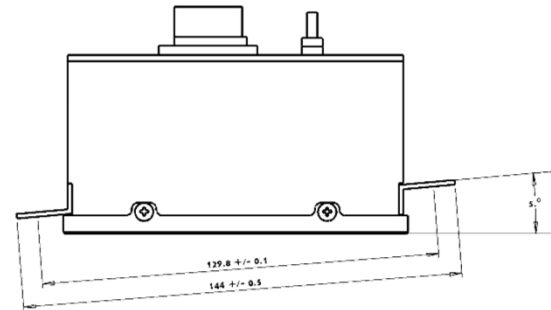
- E: Mechanical ground

•Altitude : + 55000 ft

•Weight : 310 grs (0.66 pounds)



Matiere : Aluminium AU 4 G
Traitement : Alodine A 1200 - Peinture noire face avant
Masse : 310 g +/- 10 %
Température de fonctionnement : -55°C / +70°C
Connecteur : HE 302 - 8525-17R14B5PNH (Souriau ou equivalent)
Pin A : + White LED
Pin B : Not used
Pin C : - White LED
Pin D : Ground
Pin E : Ground



CONTACTS

•Phone: +33 (0)380 356 390,

•Email: jpc@jpcaviation.com - Website: www.jpcaviation.com